

**US 23 - The Country Music Highway!**

|                |           |                |           |
|----------------|-----------|----------------|-----------|
| Ashland, KY    | 60 miles  | Nashville, TN  | 356 miles |
| Asheville, NC  | 225 miles | Frankfort, KY  | 138 miles |
| Berea, KY      | 145 miles | Huntington, WV | 68 miles  |
| Charleston, WV | 117 miles | Knoxville, TN  | 279 miles |
| Cincinnati, OH | 194 miles | Lexington, KY  | 116 miles |
| Dayton, OH     | 248 miles | Louisville, KY | 189 miles |

*Paintsville Tourism*  
Johnson County, Kentucky

With a special welcome from the  
Paintsville Tourism Commission  
1-800-542-5790  
[www.visitpaintsvilleky.com](http://www.visitpaintsvilleky.com)

- AT&T
- Kentucky Power
- Paul B. Hall Regional Medical Center
- Citizens National Bank
- Highlands Foundation
- Johnson County Public Library
- Pepsi
- Foothills Rural Telephone
- Sudden Link

**OFFICIAL SOUVENIRS  
AVAILABLE  
At Information Booth  
During The Festival**

*48th Annual*

**Kentucky  
Apple Festival.**  
of Johnson County

**Paintsville, Kentucky**

*"A Slice  
of Heaven"*

**Paintsville, Kentucky  
September 25 - October 2  
2010**

# FESTIVAL EVENTS

*Food Concessions  
Throughout Paintsville*

*Music On The Streets  
Friday - Saturday*

## SATURDAY, SEPTEMBER 25

Junior Miss Apple Blossom  
Pageant - 5:00 p.m.  
JCHS Fieldhouse  
Miss Apple Blossom Pageant  
7:00 p.m. JCHS Fieldhouse

## SUNDAY, SEPTEMBER 26

Apple Baby Contest  
PHS Gym  
Girls - 2:00 p.m.  
Boys - 3:30 p.m.

## MONDAY, SEPTEMBER 27

Grade School Folk Dance - Court St.  
(Paintsville Schools)  
9:00 a.m. - 2:00 p.m.  
Mini-Prince & Princess Contest  
5:00 p.m. PHS Gym  
Prince & Princess Contest  
6:00 p.m. PHS Gym  
Little Miss Apple Blossom Pageant  
7:00 p.m. PHS Gym  
Pre-Teen Miss Apple Blossom Pageant  
7:30 p.m. PHS Gym

## TUESDAY, SEPTEMBER 28

Mini - Apple Parade  
1:15 p.m. Paintsville Elem. School

## WEDNESDAY, SEPTEMBER 29

Little Apple Bowl (3 Games)  
5:00 p.m. Memorial Field  
Amusement Rides Open 6:00 p.m.

## THURSDAY, SEPTEMBER 30

Flea Market - City Parking Lot

## FRIDAY, OCTOBER 1

Arts & Crafts  
9:00 a.m. to 9:00 p.m.  
First Baptist Church Lot  
Paintsville Grade School Lot  
& College Street  
Flea Market  
City Parking Lots  
Merchants Market  
Court St. From 2nd to 3rd Streets  
2nd St. from Court St. to Church St.  
School Activities  
9:00 a.m. - 11:15 a.m. Courthouse  
Apple Arts Awards  
Apple Penmanship Awards  
Of Fashion Adding Match  
Of Fashion Spelling Bee  
Quilt Block Contest Awards  
11:15 a.m. Courthouse  
Of Fashion Costume Contest  
Registration 10:30 a.m.  
Contest 11:30 a.m.  
Courthouse Stage

**AMUSEMENT RIDES  
by CASEY RIDES  
TWO LOCATIONS  
BROADWAY & DOWNTOWN**

**ENJOY THE  
WINDOW DISPLAYS!**

**DUNKING BOOTH**

**EL HASA SHRINE  
CLOWNS  
TRAIN RIDE**

**AIR METHODS-KENTUCKY  
HEALTH NET  
HELICOPTERS  
BROADWAY**

**MOTION SIMULATOR**

**CLIMBING WALL**

**POSTAGE CANCELLATION  
PAINTSVILLE POST OFFICE**

**MECHANICAL BULL RIDE**

**FANTASY FUN FAIR  
GRADE SCHOOL FOLK DANCE  
(JOHNSON COUNTY SCHOOLS)  
PORTER ELEM. SCHOOL**

**PUBLIC SERVICE/  
INFORMATION BOOTHS  
MAIN STREET  
& SECOND STREET**

## FRIDAY, OCTOBER 1 (Continued)

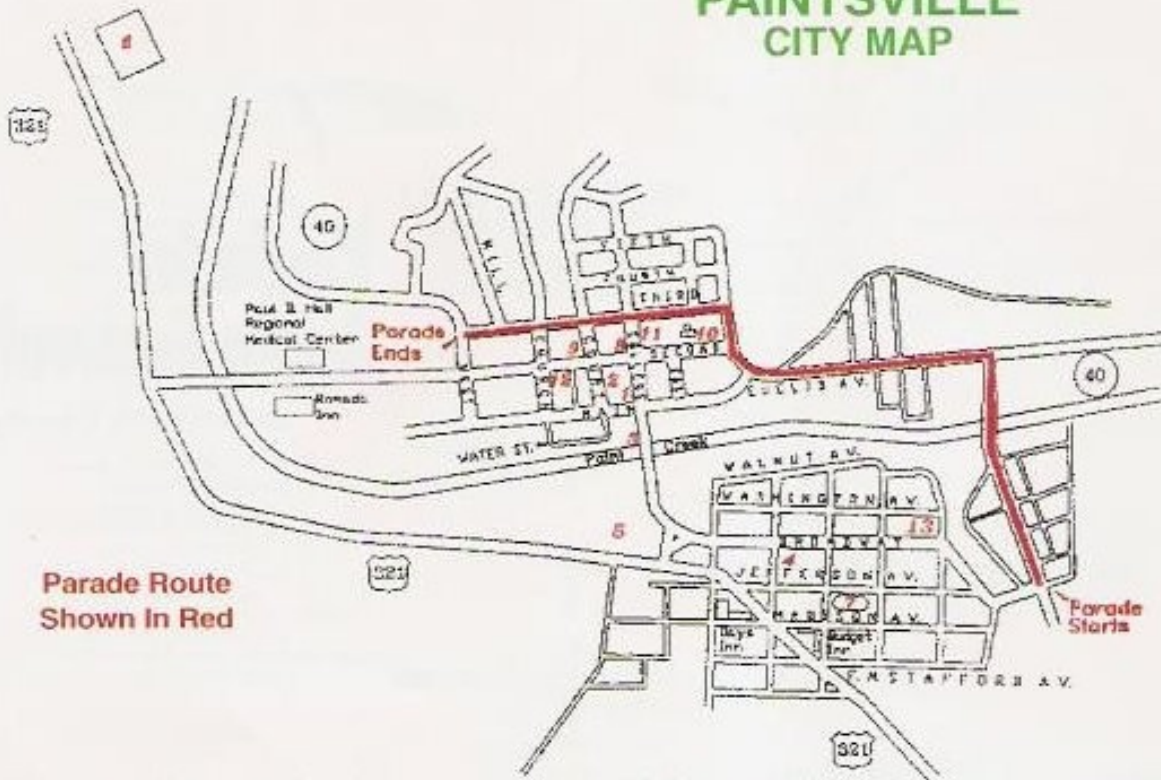
Terrapin Trot  
1:00 p.m. Our Lady of the Mt. School  
Karaoke Contest  
1:00 p.m. - 5:00 p.m. Paint Creek Park  
Clogging  
6:00 p.m. to 10:30 p.m.  
Paint Creek Park  
Crank-It-Up  
Registration 5:00 p.m.  
Citizens Bank Lot - Broadway  
Apple Twist Contest  
7:00 p.m. - 9:00 p.m.  
Ramada Inn  
Music on the Street  
1:30 p.m. - 8:20 p.m.  
Courthouse Stage  
Free Concert featuring:  
**SIEZE THE DAY**  
8:30 p.m. - Courthouse Stage

## SATURDAY, OCTOBER 2

5 - K Apple Run  
Registration - 8:00 a.m.  
Mountain HomePlace  
Arts & Crafts  
9:00 a.m. to 7:00 p.m.  
First Baptist Church Lot  
Paintsville Grade School Lot &  
College St.  
Flea Market  
City Parking Lots  
Merchants Market  
Court St. from 2nd to 3rd Streets  
2nd St. from Court St. to Church St.  
Gospel Sing with Steppin Out On Faith,  
Jackson Family, 4 the King, Spiritual  
Connection, Ronnie Spriggs and others  
Paint Creek Park - 10:00 a.m. - 6:00 p.m.  
Auto Shows  
Antique, Corvette and Street Machines  
Registration Till Noon  
Citizens Bank - Broadway  
Bike Show  
Cruising and Touring Bikes  
Registration 8:00 a.m. - 12:00 Noon  
Broadway & 12th Street  
Apple Festival Parade  
2:00 p.m.  
Music on the Street  
10:00 a.m. - 6:40 p.m.  
Courthouse Stage  
Free Country Music Show featuring:  
J.D. SHELBURNE and JUSTIN DAVID  
7:00 p.m. - Courthouse Stage  
Downtown Square Dance  
6:30 p.m. - 10:30 p.m.  
Paint Creek Park

Above Schedule Subject To Last-Minute Changes

# PAINTSVILLE CITY MAP



Parade Route  
Shown in Red

- |   |   |
|---|---|
| 1. Information Booth<br>Flea Market             | 7. Memorial Stadium                                       |
| 2. Courthouse                                   | 8. Public Service / Information                           |
| 3. Paint Creek Park                             | 10. Paintsville High School                               |
| 4. Auto Shows<br>Crank-It-Up Stereo Competition | 11. Arts & Crafts - Emergency & First Aid                 |
| 5. & 9. Amusement Rides                         | 12. Handicapped Parking<br>(Wheelchair Bound People Only) |
| 6. Johnson Central High School                  | 13. Bike Show   |

## Special Notice

NO Bicycles, Skates, Recreational Scooters, Roller Blades, Skate Boards, Live Animals or Unauthorized Golf Carts Permitted in the Festival Area.

**Information  
On Any Event**  
May Be Obtained By Sending  
A Stamped Self - Addressed  
Envelope To:

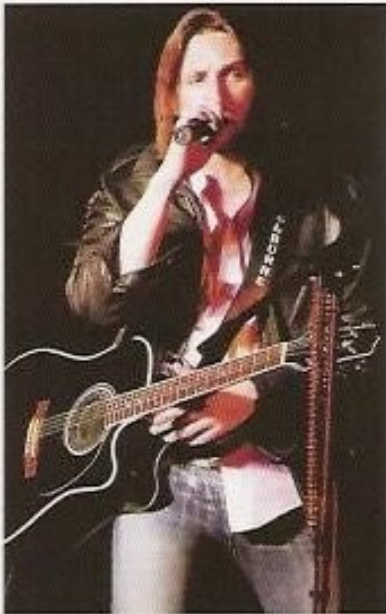
**KENTUCKY  
Apple Festival**  
of Johnson County  
P.O. Box 1245  
Paintsville, Ky. 41240  
[www.kyapplefest.org](http://www.kyapplefest.org)

### OFFICERS

Ray Tosti.....Chairman  
Pat Patton..... Vice-Chairman  
Barbara Daniel..... Secretary  
Reva Rose..... Treasurer  
Phone..... 606-789-4355

# The Kentucky Apple Festival® Free Downtown Concerts!!!

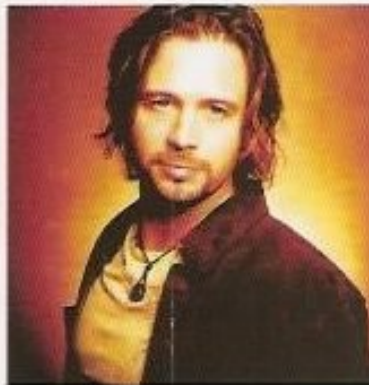
on the Main Stage at the Johnson County Courthouse  
starting at 1:30 p.m. Friday and 10:00 a.m. Saturday



Go to  
[www.kyapplefest.org](http://www.kyapplefest.org)  
for complete line-up.

*J.D.  
Shelburne*

Saturday,  
Oct. 2, 2010  
7:00 p.m.



*Justin  
David*

Also Appearing  
Saving Grace  
Kevin & Bek  
Appalachian Rain  
Bluegrass Riot  
Rocky Knob Ramblers  
The Tailor Made Band  
Bronson Bush & Head South  
Ryan Ross

*Sieze  
The Day*

Friday, Oct. 1, 2010  
8:30 p.m.

